



2025 Catalog

Control Panel, Switchgear
And Metering Solutions



Royalswitchgeardubai.com

GoSwitchgear.com

Table of content

About us

Company Overview	02
------------------	----

Services

Switchgear Assembly and Control Panel Manufacturing	04
Building Management System – Energy, Water & Gas	06
EV chargers – Type 2 & DC chargers	08
Charger Management System (CMS) for EV chargers	10

Components and Equipment

Analog Panel Meters	13
Digital Panel Meters	15
Transformers	17
LV Switchgear	19
Fuse and Base	20
Process Control Switchgear	21
Indicator and Control Switches	22
Temperature and Process Controller	23
Testing and Measuring Instruments	24
Relays	25
Signal Isolators and Transducers	27
Power Supply and Battery Charger	28
Control Panel Ventilation Asta Certified	29
Cables	30
Cable Management	30
Connectors and Terminals	31
Cable Accessories	32
Dinrail Terminal Blocks	34
Engraving Sheets	36
Earthing	37
Mounting & Spacers	38
Busbar & Accessmies	39
Solar Components	41
Switches and Accessories (ESMA approved)	42
Enclosures and Distribution Boards	44

Company Overview

Founded in 2008 by Mr. P. Muralidharan in Sharjah, **Royal Rubber Electric Equipment Trading LLC** began as a small venture with a vision to deliver quality electrical solutions across the UAE. In 2010, the headquarters moved to Dubai, aligning the company closer to major trade hubs.

Today, Royal Rubber Electric operates four warehouses across the UAE and is known for supplying reliable products in switchgear, control panels, wiring accessories, surge protection, and more. The company remains committed to customer satisfaction, timely service, and trusted solutions backed by years of industry expertise.



GoSwitchgear

Launched in 2021, **GoSwitchgear.com** is the digital arm of **Royal Rubber Electric**, created to offer easy, transparent access to electrical products online. Starting with a few items, it has grown into a comprehensive platform featuring switchgear, energy management, and EV solutions.

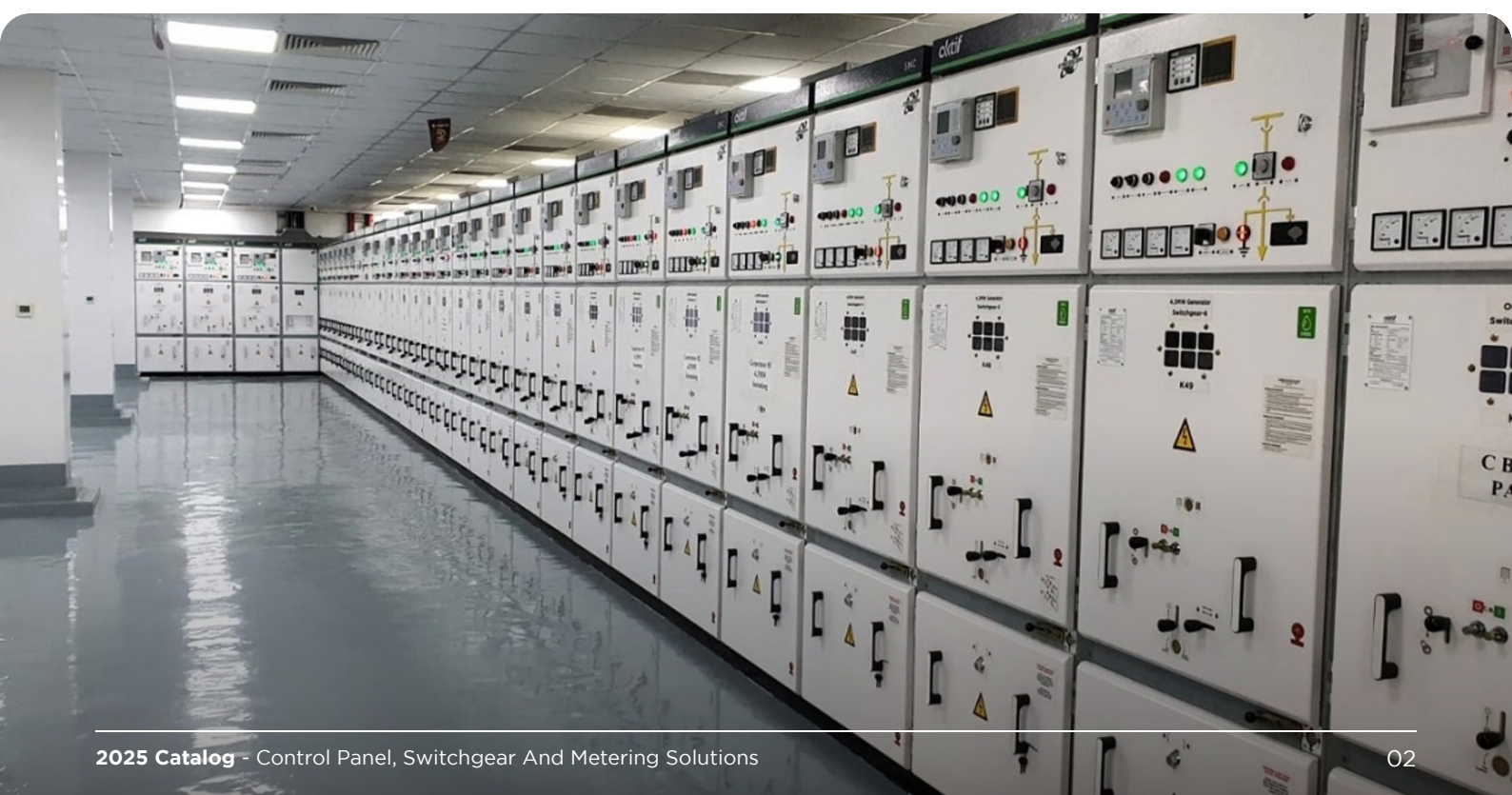
With a growing product list, detailed specs, and datasheets, **GoSwitchgear** makes it simple for customers to find what they need—quickly and confidently—enhancing reach and convenience across the UAE and beyond.

Products & Services:

- Low Voltage Switchgear Solutions
- Control Panel Components
- Electrical Equipment Distribution
- Reliable Support & After-Sales Service

Core Values:

- Innovation
- Quality Assurance
- Customer Satisfaction
- Rapid Support





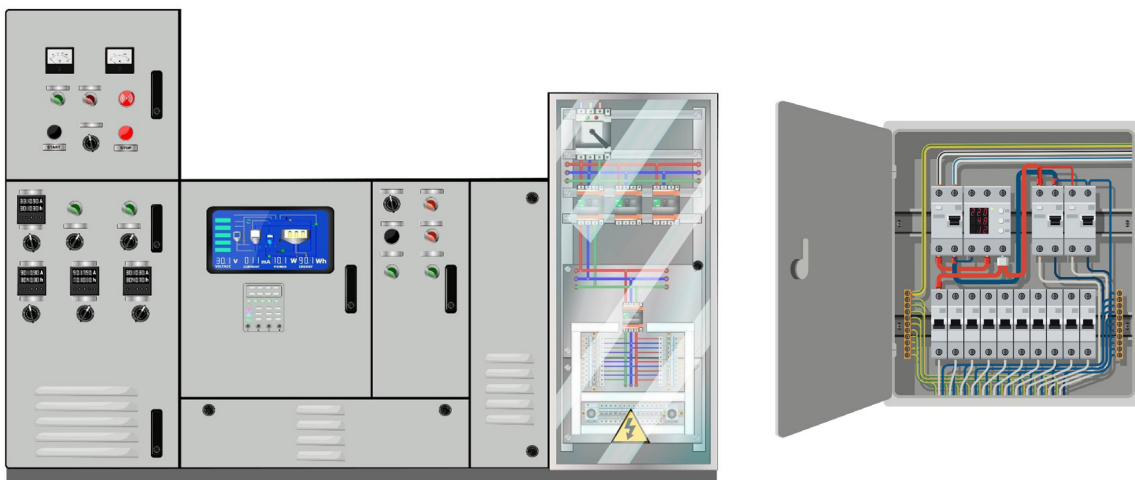
SERVICES

1 Switchgear Assembly and Control Panel Manufacturing

Custom-Built Panels Engineered at Our In-House Facility

At Royal Rubber Electric Equipment Trading LLC, we go beyond supplying components—we engineer complete control and switchgear panel solutions tailored to your project needs.

All panels are designed, assembled, and tested at our in-house workshop in the UAE, ensuring the highest standards of safety, reliability, and performance.



Our Panel Portfolio Includes:

- LV Panels & Final Distribution Boards
- Generator Panels
- Energy Monitoring Panels
- Control Panels
- ATS (Automatic Transfer Switch) Panels
- PLC Automation Systems
- Inverter Control Panels for Solar Pumps
- Synchronization Panels
- Soft Starter Panels
- Capacitor / APFC Panels
- Pump Control Panels
- HVAC Control Panels
- Energy Monitoring Panel

Design & Engineering Expertise:

- Type 1 & Type 2 Panels — Engineered with compliance to international standards
- ASTA & DEWA-approved components
- Customized to specific voltage/current ratings, IP ratings, and form factors
- Built with Quality components, ensuring quality and compatibility
- 3D CAD design, electrical schematics, and load calculations
- Routine and type testing (on request)

Applications Across Industries:

- Commercial Buildings & Malls
- Residential Complexes
- Factories & Industrial Plants
- Healthcare & Educational Facilities
- Renewable & Solar Power Systems
- Data Centers & Telecom Infrastructure

Why Choose Us?

1. In-house Design + Assembly
2. Fast Turnaround Times
3. Expert Technicians & Engineers
4. Custom Labelling, Engraving & Wiring
5. Single-Source Solution—from components to complete panels

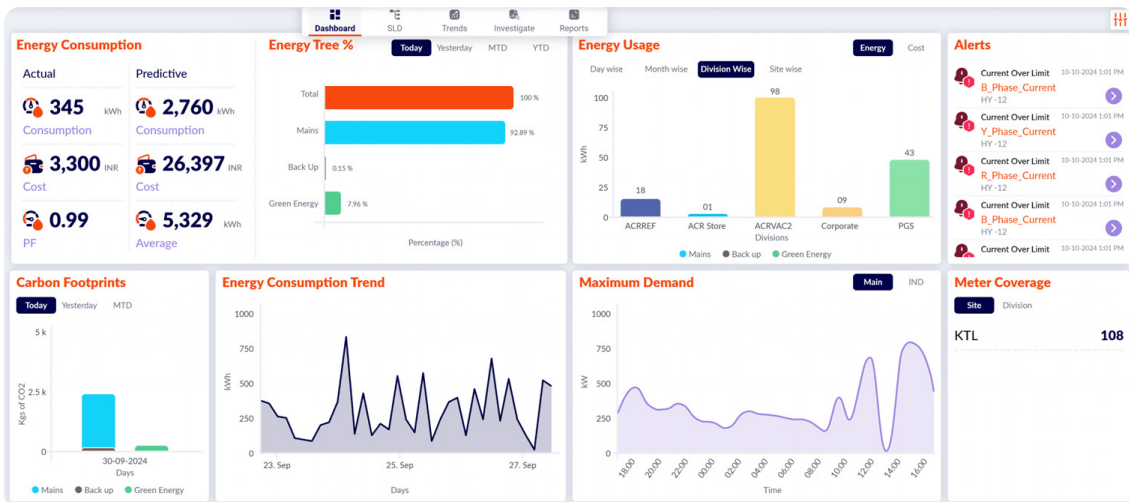
Looking to build a custom control panel?

Let our experts design the perfect solution for your application.



2 Building Management System - Energy, Water & Gas

- ✓ Remote load management for central control
- ✓ Centralised dashboard for unified KPI monitoring
- ✓ Real-time alerts on WhatsApp & Email
- ✓ Prioritize your energy efficiency initiatives
- ✓ Understand power quality issues
- ✓ Identify noncompliance for corrective action
- ✓ Get insights into the current operational issues
- ✓ Smarter decisions with AI-powered insights



- Energy Monitoring | Predictive Analytics Save up to %10 of energy cost
- No major ground-up investment needed
- No extensive re-wiring needed
- Use existing energy meters and monitor energy parameters remotely
- Get it up and running within 48 hours



Key Features & Capabilities



Single line diagram view

Gain granular access to the total energy consumption of your plant.



Patented Shield insights

The patented analytics engine throughs abnormalities in a prioritized manner for taking action.



Load manager

Switch loads on/off remotely for complete central control.



Specific energy consumption insight

Correlate energy cost with production at the machine level, line level, shop level, or plant level.



Configurable BI

The customisable dashboard can be configured to display the most important KPIs for real time management.



Complete electrical parameters management

The system provides an interface for comprehensively monitoring vital electrical parameters such as voltages, currents, power factors, power, and energy.



Bird's eye view of all branch operations

Visually identify top and bottom performing shops or divisions.



Integrate with ERP

The system is capable of fetching data from major ERP systems for a seamless approach.



Realtime alerts

Set performance thresholds with email and WhatsApp alerts when conditions are breached.

3 EV chargers – Type 2 & DC chargers



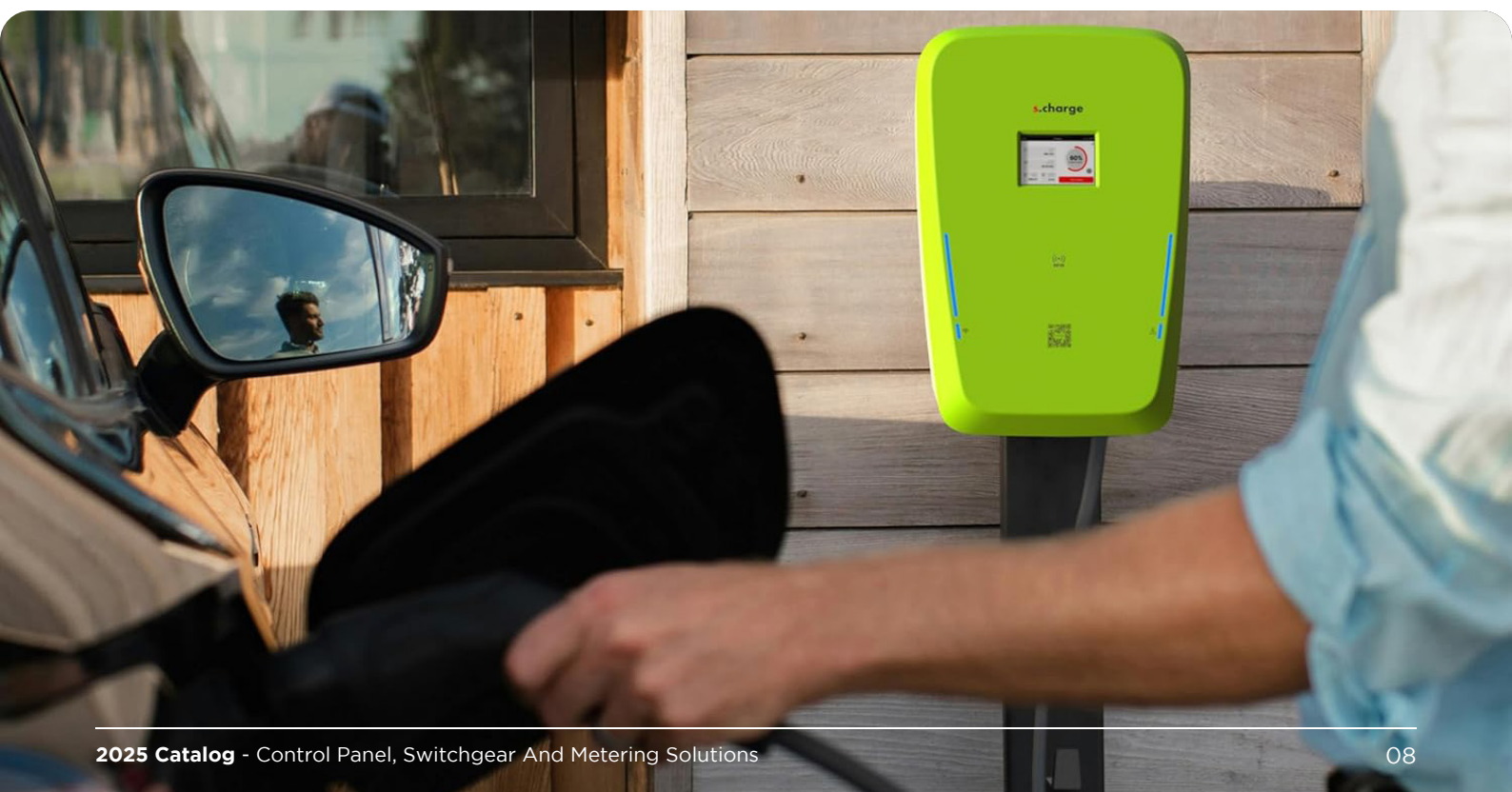
A1 Single gun
with display

A1 Dual gun
with display

A1 Single gun
without display

A1 Dual gun
without display

A1 Pro AC Charger. Type 2





Key Features

Single Or Dual Charging Gun

Option available for single or dual Type 2 charging guns, each with 5m cables

Power Options

Choose from 7.4kW (1), 11kW (3), Or 22kW (3) per gun

Energy Metering

Class 1 Energy Metering for accurate consumption

Mobile App With RFID Access

Convenient control via mobile app & RFID

Private/Commercial Mode

Flexible modes with CMS Integration for billing with pre-integrated payment gateway

Charger Management Software (CMS)

Remote diagnostics, billing, & management

Smart Load Management

Power cap & dynamic scheduling for energy optimisation

Display Interface

Intuitive User interface & interaction

Compliance Standards

Meets IS 1-17017 / IEC 1-61851 & OCPP 1.6J/2.0.1 (Coming Soon)

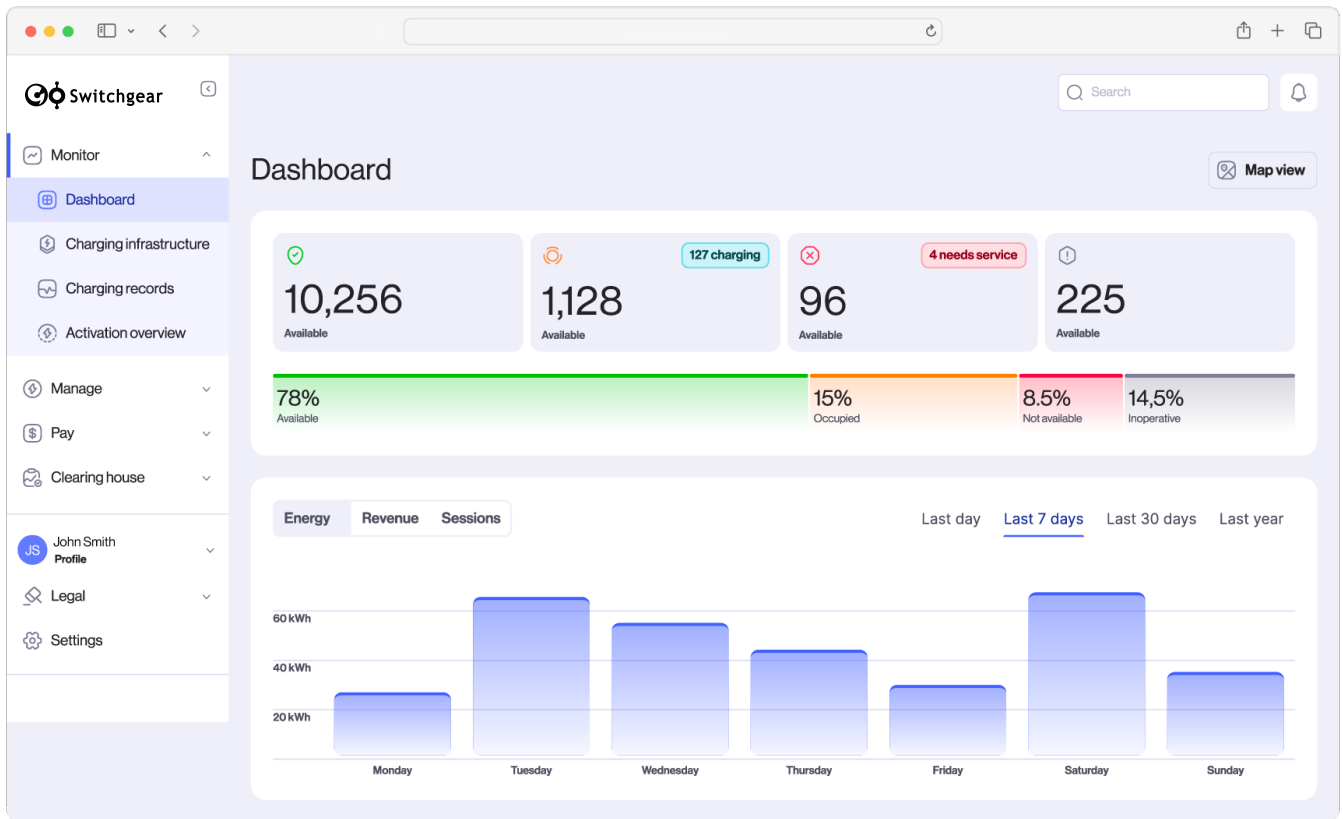
Sleek Design

Modern & Ergonomic design enhances user experience & usability

Easy Installation

Install the charger without opening the enclosure with easy click fit electrical connection

4 Charger Management System (CMS) for EV chargers



Core Features of the CMS



Quick Setup

Fastest error free setup for new account creation.



Locations & Groups

Group chargers for fast and easy management.



Tariff

Create flat or variable tariff for one or a group of chargers.



Promotion & Coupon

Run promotions and discounts to increase utilisation.



RFID

Manage user RFID access for fleets and user groups at apartments or work locations.



Plug & Charge

The best in class charging experience with plug and charge for a seamless interaction.



Realtime Status & Alerts

Get realtime status of your charger with notifications.



Energy Management

Integrated energy management for quick consumption reconciliation.



Demand Management

Load demand management solution to increase sanctioned load utilisation.



Offline Charging

No internet available? Still commercialise chargers seamlessly with our offline solution.



OCPP

Compatible with OCPP standards i.e. Hardware manufacturer agnostic.



Fleet Management

Manage spend and charge sessions by your drivers and cars with analytics & reporting.



Advanced Diagnostics

Advanced diagnostics data logs available.

Components & Equipment

Analog Panel Meters

48x48mm

72x72mm

96x96mm



**Moving Iron
Ammeters - AC
(Direct & CT type)**

- Input range: X/1A or X/5A
- Overload: 1X, 1.2X, 2X, 5X
- Accuracy: 1.5 or 1.0 on request
- Frequency: 50Hz/60Hz
- Scale: 90deg/270deg
- Direct Reading: 50mA-60A



**Moving coil
Ammeters - DC
(Direct & Shunt)**

- Input range: 100uA-15A
- Shunt: X/60mV, X/75mV
- Overload: 1X, 1.2X
- Accuracy: 1.5 or 1.0 on request
- Scale: 90deg/270deg



**Moving Iron
Voltmeter - AC**

- Input range: 30V-600V
- Shunt: X/100V
- Accuracy: 1.5 or 1.0 on request
- Scale: 90deg/270deg
- Frequency: 50Hz/60Hz



**Moving Coil
Voltmeter- DC**

- Input range: 50V-600V
- Shunt: x/5mA
- Accuracy: 1.5
- Scale: 90deg/270deg
- Frequency: 50Hz/60Hz
- Direct Reading: 5Vdc-200Vdc



Power Meter

- Input CT: X/1A or X/5A
- Voltage: 100V to 440V
- Range: 100 kW - 5 MW
- Accuracy: 1.5
- Scale: 90deg/270deg
- 3 phase 3 wire & 3 phase 4 wire
- 100W to 5MW



**Frequency Meter
45-65Hz 45-55Hz**

- Range: 45-55Hz, 45-65Hz, 55-65Hz
- Voltage: 110V-440V
- Accuracy: 1.5



Power Factor Meter Or Cos Phi Meter

- Range: 0.5 lead - 1.0 - 0.5 lag
- Voltage: 110V-440V
- Accuracy: 1.5



Maximum Demand Meter

- Moving Iron (class 1.5) and Bimetallic Type (Class 3)
- Thermal time delay of 15 min
- 1A & 5A secondary available



Double Voltmeter

- 96x96mm
- IP52 for housing
- 1.2X overload



Double Frequency Meter

- 96x96mm
- 45Hz - 65Hz/ 55Hz
- class 1.5

02 Digital Panel Meters

48x48mm

72x72mm

96x96mm



Automatic Power Factor Controllers - APFC

- Cut out Size: 96x96mm | 144x144mm
- Output: 6, 8, and 12 stage outputs
- For unbalanced and balanced loads



Digital Ammeter - AC and DC

- True RMS AC
- Current CT: 5A to 4000A
- Single phase AC & Three phase AC
- DC current: 0 to 9999VDC



Digital Voltmeter - AC and DC

- True RMS AC
- Primary PT: 100V to 520kV
- Single phase AC & Three phase AC
- DC Voltage: 29V to 750V



Multifunction Meters

- Accuracy: 0.5 and 0.2S
- Single Phase & Three phase AC and DC
- Optional Data Logging



Din Rail Energy Meters

- Accuracy: 0.5 and 0.2S
- Single Phase & Three phase AC and DC
- Digital Outputs



MID Certified Energy Meters

- Accuracy: 0.5 and 0.2S
- Single Phase & Three phase AC
- Modbus RS 485



Tariff Meters - DEWA Approved

- Class 0.2S
- Modbus



Digital PF Meter and Frequency Meter

- Voltage: 110V - 440V
- Accuracy: 1.5



Digital Synchroscope Meter

- Accuracy class: 2.5
- Electric angle: 10°
- Insulation resistance: > 100Mohm



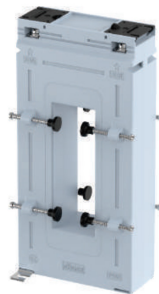
LV Current Transformer

- Complete range and sizes
- Cable size: 250 to 850 Sq mm
- Busbar: 20X10mm to 1000x10mm
- Accuracy: 0.2s, 1.0 ,0.5, and 3
- Material: Polycarbonate
- DEWA Approved CT / ADDC Approved CT
- Resin Cast on request
- Primary current up to 4000A



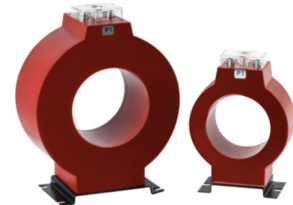
Split Core CT 100/5A to 3000/5A

- ASTA type tested
- Primary Current: 100-5000A
- Secondary Current: 5A / 1A
- Accuracy Class: 0.5, 1, 3



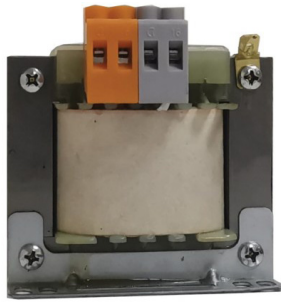
Vertical Current CT

- ABS Plastic Moulding
- Primary Current: 400A to 3200A (any other on request)
- Secondary Output: 5A/1A



Protection Class CT

- 5P5, 5P10, 5P20 (Protection)
- PS (Special purpose protection)



Control Transformer

- Rating: 25VA - 1000VA
- Input: 230V/380V/415Vac
- Output: 24Vac/48Vac



CBCT (with ELR)

- Circular: 35/70/120/210mm
- Rectangular: 400x400mm to 500x600mm
- System voltage: 720V
- Current Ratio: 1/1000 or 1/6000



MCB

- AC & DC MCB
- 10kA & 6kA
- 1P, 2P, 3P & 4P
- 4A to 100A



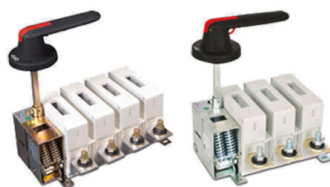
RCCB

- 2P & 4P
- Type AC
- Current sense: 30mA & 100mA



MCCB

- Rating: 16A-1600A
- Poles: 3P & 4P
- Breaking capacity up to 150kA



Switch Disconnectors & Isolator Switch

- Rating: 25A ~ 3150A, 415V, AC23A
- Poles: 2P, 3P, 4P & 6P
- Open / sheet steel enclosure version



Changeover

- Rating: 63A ~ 3150A (without fuse) 415V, AC23A
- Poles: 3P, 4P & 6P
- IP 54 & IEC 60947-3

05 Fuse and Base



RT18-32 Fuse Holder and Links

- Rating: 32A
- Voltage Rating: 690V
- Fuse size: 10*38
- AC & DC
- Sealable



NT/NH00 Fuse base and Holder

- NH00 3P and 1P gG
- Voltage: AC690V
- Breaking Capacity: 120kA
- With Cover and barrier



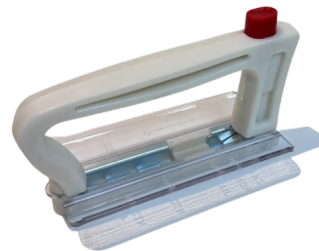
Compact NH/NT Fuse Link & Base

- AC adapter current: 125 A
- Voltage: 500 Volts
- Material: Glass, Ceramic, Plastic, Copper
- Mounting type: Through-Hole Mount



Bottle Fuse & Holder

- D type Fuse
- E27 and E33 Type
- Rated Voltage: 500Vac
- Breaking Capacity: 50kA



Fuse Puller

- Used to add and remove NH00 Fuse





Power Contactors

- Rating: 9A-2100A
- Poles: 3 & 4 Pole, control relays
- Contactor with AC3 rating 9-860A, AC/DC
- Contactor with AC1 rating 25-2600A, AC/DC



Capacitor Duty Contactor

- Rating: 7kVAR ~ 75kVAR
- Poles: 3 Pole, 415V AC, 50/60 Hz



Modular Contactor

- No of Poles: 1,2,3 & 4
- NO of modules: 1,2,3 & 6
- 16A-125A



Power Factor Correction Capacitor

- Power Range: 1.0 to 30.0 kVAR
- Voltage range: 400V, 415V, 480V
- MPP (metallized polypropylene) capacitors



Surge Protection Device SPD

- 1P+N, 2P, 3P, 4P
- AC and DC
- Type 2 & 2+3
- Remote sensing



Power Factor Correction Reactor

- Available in: Copper & Aluminum
- Detuning Factor: 5.67%, 7% and 14%
- Frequencies of 210 Hz, 189 Hz and 133 Hz for the base of 50 Hz



Thermal Overload Relays | OLR

- TR-2 Series
- For 3-phase motors, AC-3, 50/60Hz
- Auto / manual reset

Indicator and Control Switches



Indicator Lamp

- 22mm Dia
- Plastic & metal body options
- Black and Grey body
- 12V to 465V AC/DC



Selector Switches

- 22mm Dia
- Plastic & metal body options
- 2&3 Position



Selector Switches - Ammeter & Voltmeter

- 20A & 660V
- 3Phase 4 wire
- 48x60mm Front Facial



Push Buttons - Plastic And Metal

- AC15
- Voltage: 12V to 465V AC/DC
- Max Current: 3A



Rotary Cam Switches

- 16A-25A
- Poles: 1,2,3,4
- 2-3-4-5 Positions



Door Limit Switch

- 250VAC, 10A, IP64
- Various types available on request



Buzzers

- Flash/surface type



Temperature and Process Controller

48x48mm

48x96mm

72x72mm

96x96mm



PID Temp Controller

- Universal Input J / K / PT-100 / PT.1 2 or 3 wire
- 4-digit Dual LED Display
- Dual Relay for Output
- Analog input & Output



Universal Input Controller

- Accepts (J/K/RTD) Inputs
- Single Output for Load Control via (Relay || SSR)



Simple Temp Controller

- Fixed Input (J/K/RTD) for Versatility
- Flexible Output (Relay || SSR) for Load Compatibility



Cooling Controller

- Single & Dual Channel NTC Input
- 10A alarm output or 12V DC buzzer



Humidity controller

- Humidity Sensor Input
- Humidification/ Dehumidification Function



Process Indicator and Process Controller

- Universal Input: (4-20mA DC, 0-20mA DC, 0-10V DC)
- 4-Digit Display

09

Testing and Measuring Instruments



AC Clamp Meter

- Rotating clamp jaws (Patented)
- TRMS 1000VAC 1000A
- 3 ¾ Digits



AC & DC Power Clamp Meter

- For Solar Applications
- Rotating clamp jaws (Patented)
- TRMS 1000A 1000V AC/DC
- 3 ¾ Digits



Multimeter -410, 510 and 610 series

- Cost Effective and compact
- Quick measurements
- Comes with data logging and Bluetooth



Insulation Tester 5kV Suitcase Model

- Short circuit current 1.2mA, 3mA and 6mA
- Touch screen TFT color display
- PI, DAR, DD, Step voltage & Ramp Test



Insulation Tester 1kV Handheld Model

- Test voltages of 250V, 500V, and 1kV
- Resistance up to 2 TΩ
- Storage of Min, Max & last 50 readings

Protection relays



Voltage

- Digital and Analog
- Over / Under Voltage
- Adjustable Nominal Voltage Trip Point Trip Time Delay
- VLL / VLN Value Based Tripping
- Self Powered

Phase

- Phase Unbalance Protection
- Phase Failure Protection
- Phase Incorrect Sequence Protection

Current

- Over Current Protection with IDMT Curve
- Under Current Protection
- Current Loss Protection
- Current Unbalance Protection

Control relays



UVR

- 3 Phase and 1 Phase
- Auto Reset
- Power On Delay (5 - 15 Min Selectable)



Liquid Level

- Sensitivity Adjustable 1Kff to 200Kff
- 3 Probes Electrodes



ELR

- Digital and Analog
- Input 30mA - 20A AC
- Single CBCT



SSR - Solid State Relay

- 25A 40A 50A 70A
- Input 4-32V DC

Timer relays



Mechanical Timer Relays

- 24-hour Timer
- 110-230V AC 45-60Hz
- Reserve 100-150 Hours

Universal Timer

- Start Reset Microswitch
- Sec Min Hour 9.99 99.9 999
- Cyclic On Off and Delay On Off

Time Control Switch

- 50 On Steps and 50 Off Steps
- Home Automation
- Holiday Settings



On- delay

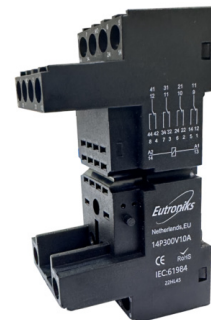


Off-delay



Star Delta Timer

Plug-in Relays | General Purpose relays



8-pin | 11-pin | 14-Pin

- 8-pin 11-pin 14-pin
- Coil Voltage 220Vac 24Vac 24Vdc 250Vac
- Contacts 4CO 2CO 3CO
- LED Indicator and Test Button

Signal Isolators and Transducers



Signal Isolators

- Single and dual output
- 4 to 20mAdc / 0 to 20mAdc / 0 to 10Vdc
- 100-270Vac & 24Vdc Supply



Current Transducer

- 0 to 5Amp AC True RMS
- Fixed Analog Outputs
- Single or Dual Output
- 3-Way Isolation



Voltage Transducer

- More than 100Kff
- Fixed Analog Outputs
- Single or Dual Output
- 3-Way Isolation



Frequency Transducer

- Accuracy class 0.2
- Rs485 Modbus Communication
- 45Hz to 55Hz 48Hz to 52Hz
- 55Hz to 65Hz / 45Hz to 65Hz

12 Power supply and Battery Charger



Power supply

- 48Vdc 24Vdc 12Vdc Output Power Supply
- Din Rail Mounted
- Over Current Protection
- 0.5A to 50 Amps



Battery Charger

- 48Vdc 24Vdc 12Vdc
- 36W 72W 120W
- Automatic 3 Stage Charge Profile
- Bulk Absorption Boost & Float

Control Panel Ventilation

ASTA approved



Fan Filter Units

- Size mm 320x320 255x255 204x204 150x150 116x116
- RAL 7032 RAL 7035
- IP54 IP 55
- Reverse Forward Flow
- ADDC Approved



Thermostats

- -10°C to +60°C & 80°C
- For Fan & Heater
- IP20



Hygostats

- Change Over Contact
- 4% RH Plus Minus 3% Tolerance



Heater

- 15W to 150W
- 45°C to Plus 70°C IP20
- DIN Rail Mounted

14 Cables



Single Core Cables

- PVC Insulation
- 0.50mm to 150mm Flexible Copper
- Plain Annealed Copper Conductor
- Harmonized Code H07V-K



Rubber cable Halogen Free

- Harmonized Code H07RNF
- Thermosetting Rubber Type EM2
- Bare Flexible Copper Class 5



Shielded Modbus cable

- PVC Insulation
- Bare Copper Strands IEC 60228 Class 5
- Core 2 to 25 Core
- Sizes 1 to 25mm

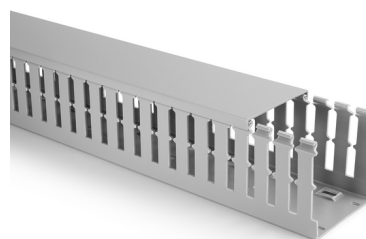
15 Cable Management

Slotted Cable Trunking



Type A Cable Trunking

- Rigid PVC
- Simple & Cost Effective
- 25x25 to 100x100



Type B Cable Trunking

- Rigid PVC
- Rib Pattern for Cable Grouping
- 25x25 to 100x100



Connectors and Terminals

- Material Tin-Plated Electrolytic Copper Halogen-Free Nylon PA66
- Service Temperature Range Minus 20°C to Plus 105°C
- Standards DIN 46288 Part 4
- Approvals UL Approved E507013
- Flammability UL-94 V2



Pin Type Lug



Cable Lugs



Ring Lug



Fork Lug



Cable Ferrule | Wire end Sleeve



Twin Cable Ferrule



Insulated Pin Terminals



Blade Terminal



Hook Blade Terminal



Male Disconnecter



Female Disconnecter

Cable Accessories



Nylon Cable Tie

- Material Nylon66 94V-2
Certificated by UL . Heat Resisting, Acid and Erosion Control. Insulates Well.
- Operating Temperature 35°C to 85°C



SS cable Tie

- Grade Stainless Steel 304
- Tensile Strength 80 Kgs
- Plastic or Polyester Coated



Cable Tie base

- 4-Way Entry
- Screw Mounting and Adhesive
- Nylon66



Spiral Bands

- Material Nylon 66 UL Recognized
- UL Flammability 94V2
- Protection of Wire Bundles Ranging from 4.8mm to 170mm



Braided Sleeve

- Material PET Polyethylene Terephthalate
- Size 3-90mm
- Working Temperature -50°C to +125°C
- Cutting Tool Hot Cutting Machine





Rubber Heat Shrink Sleeves

- Rubber Polyolefin
- 1mm -100mm
- 2:1 Shrink Ratio



PVC Connectors block

- U-Type
- 3A-100A 400V
- 4.0mm to 40.0mm



Cable Marker

- PVC 85 Degrees Heat Resistance
- 0.5mm to 35mm
- All Letters and Numbers



Id printing Tubes

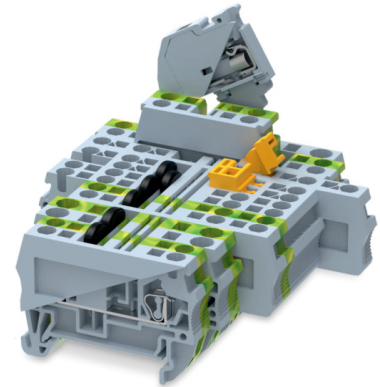
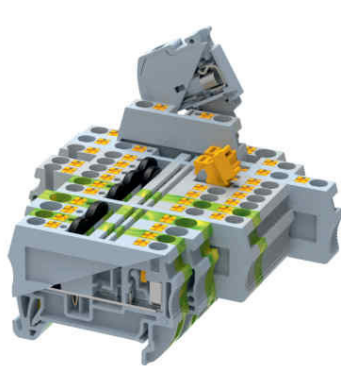
- Sizes 2.5mm 3.2mm 4mm 5mm Dia
- Material PVC
- 200 Meter Roll



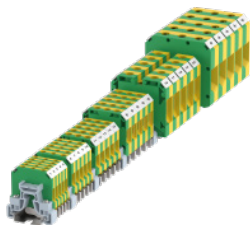
Rubber Grommet

- Open Type and Close Type
- Sizes 20-50mm

Dinrail Terminal Blocks

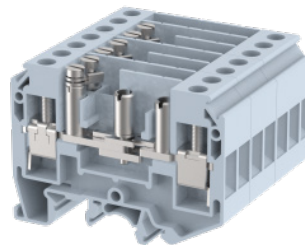


Screw Connection | Spring cage Connection | Push-In Type TB



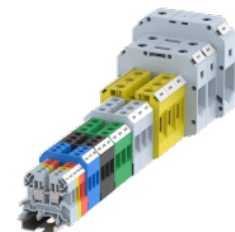
Ground Terminal Blocks (Earth TB)

- 2.5mm² to 50mm²
- IEC | ATEX | CSA | UL | ROHS



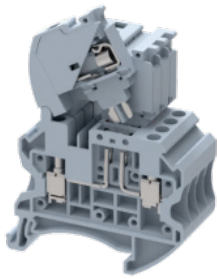
Test Disconnect TB

- 4.0mm² to 6.0mm²
- Operate without Disconnecting



Feed through TB

- Universal - TS35mm & TS32mm
- Polyamide 66
- 0.5 sq mm to 95 sq mm for screw clamp
- 0.5 sq mm to 16 sq mm



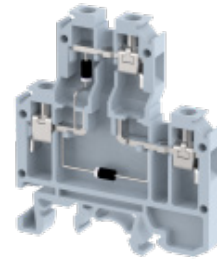
Fuse TB

- 2.5mm² to 10mm²
- Fuse-Based TB
- IEC | ATEX | CSA | UL | ROHS



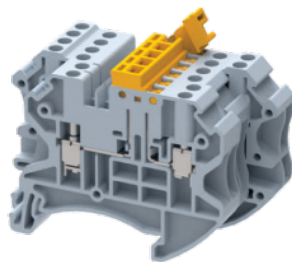
Multilevel TB

- 2.5mm² to 4.0mm²
- Double & Triple Level
- IEC | ATEX | CSA | UL | ROHS



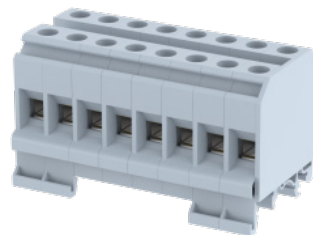
Component TB

- 2.5mm²
- Diode-based terminal blocks
- IEC | ATEX | CSA | UL | ROHS



Knife Disconnect TB

- 2.5mm² to 6.0mm²
- Two states of Switching
- IEC | ATEX | CSA | UL



Distribution Block

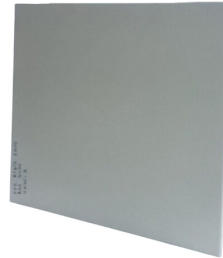
- Power Distribution & Earthing
- 2.5mm² to 2x16.0mm²
- IEC | ATEX | CSA | UL

19 Engraving sheets



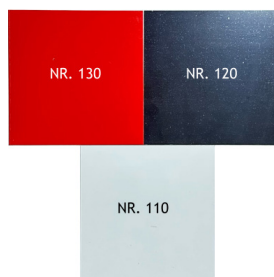
Polycarbonate

- L x W: 8 x 4 feet
- 2, 3 & 5 mm thick
- IEC60093 test certified
- V0 flammability
- Colour: Transparent



PVC

- L x W: 8 x 4 feet
- 2, 3 & 5 mm thick
- 140°F (60°C)
- Colour: RAL 7032



ABS - Eckart

- 1220 x 610 mm x 1.5mm
- Engraving/Cutting Depth: 0.5mm
- Max Temperature: 85°C
- Colour: Red/Black/White
- 1220 x 610 mm



Bakelite sheets

- Grade LPP01(P!)
- Thickness: 1.0, 2.0, 3.0mm
- 2440mm x 1220mm | 1220 x 1220 mm
- RAL 7032





Earth Bars

- Material: Brass
- Finish: Nickel Plated
- Screw: Brass/M.S. Nickel Plated
- 72 ways (0.5m) & 142/144 ways (1mtr)



Neutral link (with base)

- Material: Brass
- Finish: Nickel Plated
- Screw: Brass/M.S. Nickel Plated
- 7 ways | 10 ways | 13 ways

Mounting & Spacers



Hexagonal spacers

- M6 Standard thread
- Material: Steel
- Length: 10mm to 125mm



Copper bush

- Material: Tinned Copper
- M6 and M8 Standard thread
- Length: 10.0, 15.0, 20.0mm



DIN Rail

- Material: Cold rolled sheets
- Length: 2 meters
- Thickness: 1 mm / 1.5 mm
- White (chrome plated) OR
- Yellow (zinc-passivated)



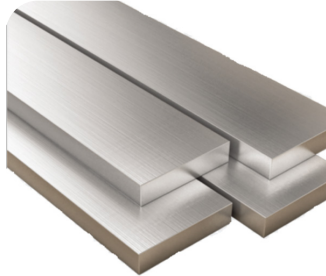
C Channel

- Material: Cold rolled sheets
- Length: 2 meters
- Thickness: 1 mm / 1.5 mm
- White (chrome plated) OR
- Yellow (zinc-passivated)



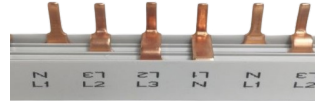
G - Rail

- Material: Cold rolled sheets
- Zinc yellow passivated or chrome plated (white)
- With or without perforation
- CE and ROHS compliant



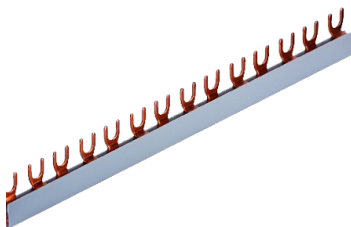
Tinned Copper Busbar

- Busbar Size: 12x5 mm to 100x10 mm
- Length: 4 meters
- Purity: >99.99%
- Tin Plating: 3 – 5 microns



Comb Busbar - Pin Type

- No of Poles: 1, 2, 3 OR 4
- Length: 1 meter
- Max Current: 63A for 1P & 80A for 2,3,4P



Comb Busbar - Fork Type

- No of Poles: 1, 2, 3 OR 4
- Length: 1 meter
- Max Current: 63A for 1P & 80A for 2,3,4P



PVC Busbar Shrink Sleeves

- Sizes: 17mm to 170mm Lay flat width
- Working Temperature: 90°C
- 150 °C - 170°C for 4-5 minutes



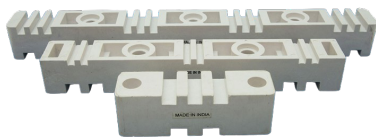
BusBar Protection Cover

- Breakable
- For 5 module width
- No. of poles 1-4
- Cross section 10-16 mm²



BusBar End Cover

- PVC Plastic
- 1, 2, 3 OR 4 pole



Busbar Supports

- For Vertical Busbar
- Material: SMC (Sheet Moulding Compound)
- 2 Run 1P & 3 Pole
- 3 Run 1P & 4 Pole



Standoff Insulators

- Types: Conical | Drum | Hexagonal
- Material: DMC
- Complete Size range

23 Solar Components



DC MCB

- Range: 6A-40A
- 250V (1 Pole) & 500V (2 Pole)
- Breaking Capacity: 3kA / 6kA
- Standard Conformity: IEC60947



DC SPD

- Type 2 | Class 2
- Voltage: 500V-1500V
- Max In: 20kA-50kA



MC4 Straight & Panel Connectors

- With NEC interlock
- 2.5mm² | 4mm² | 6mm² | 10mm²
- TUV certified
- 1500V DC



MC4 Wire Harnesses with Fuse

- Y-type male & female Harness
- 2.5 mm² / 4.0 mm² / 6.0 mm²
- Max Voltage: 1000Vdc
- Max Current: 30A



Solar Crimping Tool

- 2.5 / 4.0 / 6.0 mm² Solar Cable
- Part Number: ESCCT



DC Fuse Holders 1500V

- Rated Voltage: 1500V
- Rated Current: 30A
- gPV Fuse size 10 X 85 mm

Switches and Accessories (ESMA approved)



White Switches and sockets

- Front Frame: Fire retardant Polycarbonate (PC) material
- Contacts: Silver cadmium oxide (AgCdO)
- Terminals: Brass with proper plating
- Aesthetic and modular design



Premium Golden and Black Switches

- Sleek, clean lines with minimalistic form
- Hidden screws for a premium, flush appearance
- Available in Golden and Black finishes
- Switches: 16A, 240V~ (suitable for inductive loads like CFLs and fans)
- Sockets: 13A to 15A, rated for 250V AC
- USB Ports: Present in selected modules, typically 1.5A to 2.1A output

LED - various types



Backlit Panel Light - 60x60

- 40 watts, 80 Lumens/Watt
- 86% energy saving
- Colour temp: 3000K/4000K/6000K



Strip Light - 7W & 12W

- 5 meters long
- 26 lumens per LED
- 240 LEDs per meter
- Color: 3000K, 6000K, R/G/B



Spot Light - 3W to 30W

- 85 lumens per watt
- 3W | 6W | 9W | 16W | 24W | 30W
- 3000K/4000K/6000K



Surface Light

- Easy replacement of angle and batten holder
- 7W | 9W | 12W | 20W
- 3000K/4000K/6000K

Enclosures and Distribution Boards



Metal Enclosure - Wall mount

- Sheet Steel enclosure
- Zinc coated mounting plate 1.5mm
- Color: RAL 7032
- Protection degree: IP 66
- Mechanical Impacts: IK 10



PVC Junction box

- Made of self-extinguishing engineering plastic
- RAL 7035 grey
- Max operation temperature: -25°C to +85°C
- Insulation complies to EN 60439-1. IP65



Row Distribution Board

- C.R.C.A Body and end plate
- Powder Coated RAL7035
- 3 ROW | 4 ROW | 5 ROW - 16 ways
- Flush Type



SPN Distribution Board

- Innovative Design
- Degree of Protection IP 30 & IP 42
- Mechanical Impact Strength IK 08
- Detachable Gland Plate
- Attractive White Shade (RAL 9010) Matt Finish








Blanking plates

- 12 modules
- 1 meter length
- Material - ABS/ PVC
- Colour - Grey RAL 7032/7035





Contact Info

Dubai Branch

-  Dubai: Warehouse 1 and warehouse 3
1st street, Amman str , Al Qusais Industrial Area 3
-  Phone: 054 530 8331  Landline: 04 258 0780
-  Email: support@goswitchgear.com / info@royalswitchgear.com
-  Working Days/Hours: Mon - Sat / 9:00 AM to 6:00 PM



Abu Dhabi Branch

-  Abu Dhabi: A20 - building 13 Al Nabdha Street - Musaffah - M44
-  Landline: +971 26 422909
-  Email: Support@goswitchgear.com / info@royalswitchgear.com
-  Working Days/Hours: Mon - Sat / 9:00 AM to 6:00 PM



Corporate website
Royalswitchgeardubai.com



Webstore
Goswitchgear.com